

ペーパーテスト式  
団体受験プログラム



音声CD  
付き

# TOEFL ITP<sup>®</sup> TEST 1回分模試

明海大学教授

白野伊津夫 監修



語研

TOEFL, TOEFL ITP and TOEFL iBT are registered trademarks of Educational Testing Service (ETS).  
This publication is not endorsed or approved by ETS.

ペーパーテスト式  
団体受験プログラム

# TOEFL ITP<sup>®</sup> TEST 1回分模試

【別冊】  
Test Book

語研

TOEFL, TOEFL ITP and TOEFL iBT are registered trademarks of Educational Testing Service (ETS).  
This publication is not endorsed or approved by ETS.

# 目次

## Practice Test

### Section 1 Listening Comprehension

Part A ● 02-33 .....	5
Part B ● 34-39 .....	9
Part C ● 40-47 .....	11

### Section 2 Structure and Written Expression

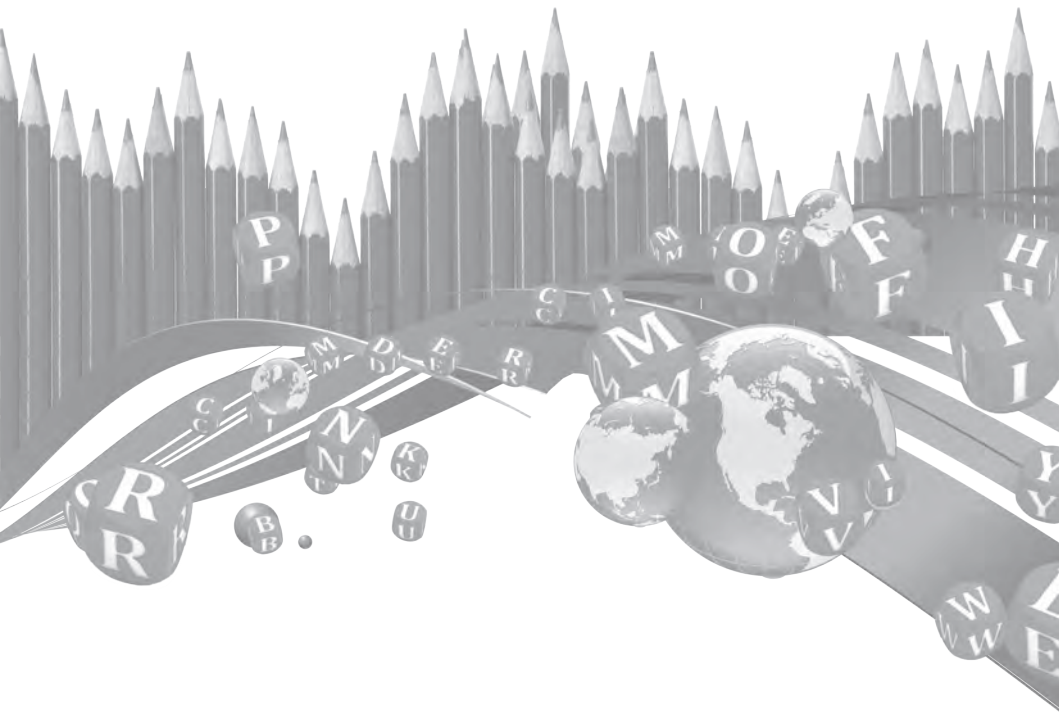
Structure .....	14
Written Expression .....	17

### Section 3 Reading Comprehension

Reading Comprehension .....	23
-----------------------------	----

Answer Sheet .....	35, 37, 39
--------------------	------------

# Practice Test



**NO TEST MATERIAL ON THIS PAGE**

*GO ON TO THE NEXT PAGE* 

## *Section 1—Listening Comprehension*

---

Section 1 is designed to measure your ability to understand spoken English. This section has three parts: short conversations, long conversations, and talks. Each short conversation is followed by one question. Each long conversation and each talk is followed by four questions. There are 50 questions in this section.

### **Part A**

Listen to the short conversations that follow. After each short conversation, choose the best answer to the question about the conversation.

1. (A) She does not have any recommendations.  
(B) Nearby residences are expensive.  
(C) Students are advised to live on campus.  
(D) There are few apartments in the area.
2. (A) Some rest may help in a recovery.  
(B) The woman has no plans for the weekend.  
(C) The woman should follow clinical advice.  
(D) The sickness will go away soon.
3. (A) The man did not have enough time to prepare for the test.  
(B) Accounting is a demanding subject.  
(C) Another approach may earn a higher score.  
(D) Studying is always worthwhile.
4. (A) The machine was often broken.  
(B) The computer center will be closed.  
(C) The equipment is being repaired.  
(D) The technician is overdue.
5. (A) Forming a charity group was impossible.  
(B) Exceeding a goal was unrealistic.  
(C) The project would not meet the deadline.  
(D) The woman was too busy to attend the event.
6. (A) Reserve a campus facility  
(B) Help with renovations  
(C) Push back a schedule  
(D) Visit a dining outlet
7. (A) The woman said something that was incorrect.  
(B) The site did not hold any large school park.  
(C) The history of the location is relatively unknown.  
(D) The students are curious about the science lab.
8. (A) A school fee may be increased.  
(B) A service may be upgraded.  
(C) A dormitory feature was improved.  
(D) A policy change was published.
9. (A) She has already been to Vietnam.  
(B) Communication skills will help her.  
(C) She has taught language courses.  
(D) Local people still remember her.
10. (A) Find a bigger parking space  
(B) Loan her car to him  
(C) Change her commute  
(D) Speak with the faculty

GO ON TO THE NEXT PAGE 

11. (A) It is a challenge to beat Peter.  
(B) She has been frequently compared with Peter.  
(C) The man should ask Peter for some advice.  
(D) She will see what she can do.
12. (A) A vote count is certainly fair.  
(B) The other candidate is better qualified.  
(C) The election lacks much interest.  
(D) An outcome remains uncertain.
13. (A) Doing some dishes  
(B) Emptying the wastebasket  
(C) Canceling an order  
(D) Having a meal
14. (A) Wet weather is continuing.  
(B) It was warmer yesterday.  
(C) The man has no class today.  
(D) The woman has borrowed the man's umbrella.
15. (A) They enjoy painting classes.  
(B) They teach art classes.  
(C) They are in an art gallery.  
(D) They are on a nature tour.
16. (A) She should save up more money.  
(B) The man should submit an application.  
(C) The school is reviewing its hiring policies.  
(D) A new cafeteria will be open soon.
17. (A) Heading for a lecture  
(B) Adjusting a device  
(C) Discussing a schedule  
(D) Visiting a library
18. (A) The budget is flexible.  
(B) The investment is low.  
(C) The man should follow the dress codes.  
(D) The outfit is worth purchasing.
19. (A) The tablet is possibly missing.  
(B) The man gives up too easily.  
(C) She will call the student lounge right away.  
(D) The lost and found is still open.
20. (A) He wants to debate with the students.  
(B) He plans to set up a Webcast.  
(C) He will be a group member.  
(D) He hopes to participate in the competition.

GO ON TO THE NEXT PAGE 



21. (A) A follow-up research will be necessary.  
(B) He has not heard from the woman for long.  
(C) A make-up exam will not be provided.  
(D) The woman is normally well-prepared.
22. (A) Their quality must be improved.  
(B) Their total should be narrowed down.  
(C) They will be organized into groups.  
(D) They will be viewed by various judges.
23. (A) The party was rescheduled.  
(B) The woman has a sleeping problem.  
(C) The speakers are neighbors.  
(D) The dormitory was renovated.
24. (A) The team will hire a new coach.  
(B) The championship game is sold out.  
(C) The woman is a big fan of football.  
(D) He doubts a promise will be fulfilled.
25. (A) Risk factors are lower than they seem.  
(B) The woman can overcome difficulties.  
(C) Small firms are often quite profitable.  
(D) The woman should prepare for making career choices.
26. (A) He was saving money to travel to Europe.  
(B) He was busy completing his degree.  
(C) He would work in Boston during the summer.  
(D) He would apply for scholarships.
27. (A) The online prices are lower.  
(B) The product should be the right fit.  
(C) The brand is stylish.  
(D) The order is completed.
28. (A) He does not rely on exercise.  
(B) He has not lost much weight.  
(C) He often gives up on diets.  
(D) He sometimes puts on weight.
29. (A) She wants to confirm a schedule.  
(B) She declined an invitation.  
(C) She did not make a statement.  
(D) She does not know how to buy tickets.
30. (A) She lacks instructional experience.  
(B) She is learning another instrument.  
(C) She only provides help for a fee.  
(D) She depends on outside experts for help.

GO ON TO THE NEXT PAGE 

## Part B

Listen to the longer conversations that follow. After each conversation, choose the best answer to each of the four questions about the conversation.

31. (A) A new series of lectures  
(B) An academic controversy  
(C) An area of research  
(D) A university project
32. (A) He develops materials for internal heating.  
(B) He designed the professor's residence.  
(C) He and the professor co-authored a book.  
(D) He is an expert on active solar energy generation.
33. (A) On the development of skyscrapers  
(B) On the future of nuclear energy  
(C) On the usage of solar panels  
(D) On the materials used in structures
34. (A) Read a publication  
(B) Conserve electricity  
(C) Narrow down their study focus  
(D) Recycle waste heat
35. (A) To apply for a school program  
(B) To discuss an academic plan  
(C) To fulfill a school requirement  
(D) To get some professional advice
36. (A) It is closed to freshmen.  
(B) It is a noncredit course.  
(C) It is too specialized.  
(D) It is unrelated to his major.
37. (A) The unclear career track  
(B) The need for teacher certification  
(C) The competitive market of math-based jobs  
(D) The necessity for advanced study
38. (A) Send information links  
(B) Explain her doctorate  
(C) Post a list on a Web site  
(D) Outline a course

GO ON TO THE NEXT PAGE 

ペーパーテスト式  
団体受験プログラム



# TOEFL ITP<sup>®</sup> TEST 1回分模試

明海大学教授

白野伊津夫 監修



## 語研

TOEFL, TOEFL ITP and TOEFL iBT are registered trademarks of Educational Testing Service (ETS).  
This publication is not endorsed or approved by ETS.

## はじめに

TOEFL (Test of English as a Foreign Language) は世界各国で実施されている英語運用能力評価テストです。TOEFL には現在 TOEFL iBT® と TOEFL ITP® の 2 バージョンがあります。TOEFL iBT® は大学、大学院留学に必須とされ、出題、解答ともにコンピュータ画面を通して行われるメインプログラムです。一方、TOEFL ITP® はペーパーテスト形式の団体受験プログラムで、日本国内では大学のクラス分け、単位認定、留学者選抜試験などに活用されています。

本書は、TOEFL ITP® を受験なさる方々を対象として、短期間でスコアアップをめざすための模擬試験問題集です。TOEFL ITP®1 回分 140 問と、解答・解説・訳・語句注を収録しています。構成は次のとおりです。

**Answer Key** 全 140 問のわかりやすい解答・解説・訳・語句注をまとめてあります。Listening Section の音声スクリプトに加えて、Structure and Written Expression, Reading Comprehension の全問も英和対照で収録していますので、復習を繰り返すうえで最適です。

**Test Book** (別冊) 全 140 問の取り外し可能な問題冊子です。判型、使用フォントなども実際の TOEFL ITP® をほぼ再現していますので、実戦に近い形式で受験対策をしていただけます。Listening Section の解答には付属の音声 CD をお使いください。解答は巻末の Answer Sheet をお使いください。なお、予備の Answer Sheet は <http://www.goken-net.co.jp/catalog/appendix/293.html> からダウンロードしていただけます。

**音声 CD** (付属) Listening Section 全問の音声を収録しています。設問ごとにトラック番号を付けてありますので、細かな頭出し、サーチ、スキップ、ランダム再生が可能です。

本書が皆さんのスコアアップ、そして英語力向上の一助となることを心より願っています。

2014 年 10 月

編 者

# 目次

はじめに ..... 3

## About the TOEFL ITP® TEST

TOEFL ITP® とは .....	6
TOEFL ITP® の構成 .....	7
TOEFL ITP® の出題形式と解答方法 .....	8
TOEFL ITP® と TOEFL iBT® の違い .....	10
スコアについて .....	11
スコア比較 .....	12

## Answer Key

正答一覧表 .....	14
-------------	----

### Section 1 Listening Comprehension

Part A ● 02-33 .....	15
Part B ● 34-39 .....	31
Part C ● 40-47 .....	39

### Section 2 Structure and Written Expression

Structure .....	53
Written Expression .....	63

### Section 3 Reading Comprehension

Reading Comprehension .....	77
-----------------------------	----

Answer Sheet .....	109
--------------------	-----

【編集協力】(株) CPI Japan (Craig Brantley, Nobuyasu Sakami)  
エートゥーゼット

【装丁】山田英春

【CD録音】Edith Kayumi / Josh Keller / Jack Merluzzi / Carolyn Miller  
一般財団法人英語教育協議会 (ELEC) 録音事業部

本書の付属音声 CD には、書名やトラック名などの文字情報は含まれておりません。本 CD をパソコンに読み込んだ際に表示される書名やトラック名などの文字情報は、弊社の管理下でない外部のデータベースを参照したものです。あらかじめご了承ください。

# About the TOEFL ITP® TEST

